



 **LED** LANDSCAPE LIGHTING

## Step and Wall Lighting for Hardscapes

Our LED low voltage hardscape step and wall lights are powder coated aluminum fixtures with a stainless steel bracket. These hardscape lights have the option of 1, 4 or 8 LED lights to highlight steps, walls and outdoor kitchens.



### ITEMS INCLUDED:

- Silicone Wire Nuts
- Lead Wire: 36"

### LIGHTING SPECIFICATIONS:

- Construction: Powder Coated Aluminum
- Bracket: Stainless Steel
- Finishes: Black, Bronze, and Gray
- Light Source: Integrated 50/50 SMD LED
- Color Temp (CCT): 2700K
- Voltage Range: 9V – 15V AC/DC
- Power Supply: 12V Low Voltage Transformer (Sold Separately)

# HARDSCAPE LIGHTS



### TS-A1000

Dimensions: 7"(L) x 3"(W) x 5/8"(H)

Light Count: 4

Watts: 1.4W

Lumens: 78



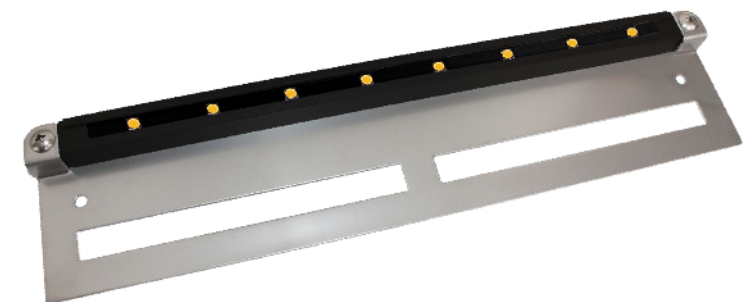
### TS-A500

Dimensions: 3.5"(L) x 3"(W) x 5/8"(H)

Light Count: 1

Watts: 0.2W

Lumens: 24



### TS-A2000

Dimensions: 13"(L) x 3"(W) x 5/8"(H)

Light Count: 8

Watts: 2.5W

Lumens: 130

**NEW!**

— AVAILABLE SUMMER 2019 —

# PAVER LIGHTS



## TS-HPL-6

Dimensions: 6"(L) x 3/4"(W) x 2-3/8"(H)  
Watts: 1.5W  
Lumens: 35



## TS-HPL-8

Dimensions: 8"(L) x 3/4"(W) x 2-3/8"(H)  
Watts: 1.8W  
Lumens: 45



## TS-HPL-9

Dimensions: 9"(L) x 3/4"(W) x 2-3/8"(H)  
Watts: 2.5W  
Lumens: 60

## Create an LED Border in Your Hardscape and Light-up the Way

Our low voltage LED paver lights are a powder coated aluminum housing with a frosted acrylic lens cover. The paver lights are available in 6", 8" & 9" lengths designed to fit along sailor and soldier course borders of patios, walkways, and driveways using standard 60mm or less paver products.

### ITEMS INCLUDED:

- Silicone Wire Nuts
- Lead Wire: 36"

### LIGHTING SPECIFICATIONS:

- Construction: Powder Coated Aluminum with Frosted Acrylic Lens
- Finish: Black
- Light Source: Integrated LED's
- Color Temp: (CCT) 2700K
- Voltage Range: 10V – 15V AC/DC
- Power Supply: 12V Low Voltage Transformer (Sold Separately)

## More for Your Hardscape

Get a gorgeous pillar light with a beautiful antique brushed bronze finish, which has a frosted heat resistant glass encasement for a decorative, modern look. Use it to add a warm, welcoming glow to your outdoor living area.

### ITEMS INCLUDED:

- Silicone Wire Nuts
- G4 LED Lamp
- Lead Wire: 36"
- Mounting Base
- Masonry Drill Bit and Template
- Anchor Kit

### LIGHTING SPECIFICATIONS:

- Construction: Powder Coated Aluminum & Frosted Tempered Glass
- Finish: Antique Brushed Bronze
- Light Source: G4 LED Lamp
- Watts: 3W
- Color Temp (CCT): 2700K
- Voltage Range: 9V – 15V AC/DC
- Power Supply: 12V Low Voltage Transformer (Sold Separately)
- Mounting Plate: 5.5" x 5.5"

# PILLAR LIGHTS



### TS-PL100

Dimensions: 9"(L) x 9"(W) x 20"(H)

Watts: 3W

Lumens: 300



### TS-PL101

Dimensions: 9"(L) x 9"(W) x 18"(H)

Watts: 3W

Lumens: 300



# ACCENT LIGHTS



## TS-B102

Light Beam: 40°  
Watts: 4W (MR16)  
Lumens: 250



## TS-B103

Light Beam: 40°  
Watts: 4W (MR16)  
Lumens: 250



## TS-B105

Light Beam: 60°  
Watts: 5.5W (MR16)  
Lumens: 450



## TS-B106

Light Beam: 120°  
Watts: 8W (PAR36)  
Lumens: 900

## Heavy-duty Accent Spotlights

Our professional grade LED low voltage landscape accent lights are constructed of heavy-duty die-cast brass with a durable finish. Accent lights are commonly used to highlight trees, shrubs, walls or other focal points in the landscape. The accent lights feature a threaded knob to adjust beam angle and heat resistant glass lens.

### ITEMS INCLUDED:

- Silicone Wire Nuts
- LED Lamps (as specified)
- Lead Wire: 36"
- Heavy-duty 8" Ground Stake

### LIGHTING SPECIFICATIONS:

- Construction: Solid Brass
- Finishes: Black or Bronze
- Light Source: MR16 LED Lamp
- Color Temp (CCT): 2700K
- Voltage Range: 9V – 15V AC/DC
- Power Supply: 12V Low Voltage Transformer (Sold Separately)

# WELL LIGHTS

## TS-B201

Light Source: PAR36 LED Lamp  
Light Beam: 120°  
Watts: 8W  
Size: 5.5"(Dia.) x 9.625"(H)  
Lumens: 900'



## TS-B203

Light Source: MR16 LED Lamp  
Light Beam: 40°  
Watts: 4W  
Size: 4"(Dia.) x 6.875"(H)  
Lumens: 250

## Showcase Your Property with In-ground Lighting

These low voltage landscape LED well lights are heavy-duty complete with heat resistant glass. Use to highlight focal point plants or trees or to light up a wall, statue or fountain.

B201 features a brass cap on top of a black PVC ground pipe. B203 features a brass shroud cover with a black composite in-ground housing.



### ITEMS INCLUDED:

- Silicone Wire Nuts
- LED Lamp
- Lead Wire: 36"

### LIGHTING SPECIFICATIONS:

- Construction: Brass & PVC
- Finish: Black or Bronze
- Color Temp (CCT): 2700K
- Voltage Range: 9V – 15V AC/DC
- Power Supply/Voltage: 12V Low Voltage Transformer (Sold Separately)

# PATH LIGHTS



## TS-B301

Overall Height: 22-1/4"  
Lumens: 300



## TS-B302

Overall Height: 23-1/4"  
Lumens: 300



## TS-B304

Overall Height: 24"  
Lumens: 300



## TS-B306

Overall Height: 21-1/4"  
Lumens: 300

## Elegant & Stylish Path Lights

Our professional grade LED low voltage landscape path lights are a solid heavy-duty brass fixture used to highlight walkways, pathways and themed areas. Our path lights feature a stylish designed head with a 360 degree LED lamp for optimum light output and include a heavy-duty ground stake.

### ITEMS INCLUDED:

- Silicone Wire Nuts
- G4 LED Lamp
- Lead Wire: 36"
- Heavy-duty 8" Ground Stake

### LIGHTING SPECIFICATIONS:

- Construction: Solid Brass
- Finishes: Black or Bronze
- Light Source: G4 LED Lamp
- Light Beam: 360°
- Watts: 3W

- Color Temp (CCT): 2700K
- Voltage Range: 9V – 15V AC/DC
- Power Supply: 12V Low Voltage Transformer (Sold Separately)



## Smart Landscape Lighting Control

Smart Bluetooth wireless landscape lighting transformer with a dashboard to check status and manually control the lights. Power meter feature displays the watts used, available, and percent of full capacity. Multiple low-voltage 14V AC output terminals for use with LED lighting. Astronomical and time-of-day based programs.

### SPECIFICATIONS:

- Dimensions: 5.3"(W) x 10.9"(H) x 5.3"(D)
- Efficiency Certified: DOE & CEC
- UL/cUL 1838 listed and FCC Part 15 Class B
- Exterior: Anodized Aluminum
- IP Rating: IP 21
- Input Voltage Rating: 120V AC
- Output Voltage Rating: 14V AC

### 150 WATT MODEL:

- Max Output Current: 12.5 A
- Output Terminals: 2

### 300 WATT MODEL:

- Max Output Current: 20.5 A
- Output Terminals: 3

# SMART WIRELESS CONTROL



## TS-TAAB-150

Max Output Power: 150 W

## TS-TAAB-300

Max Output Power: 300 W



# ACCESSORIES & LAMPS



**TS-TSST-75**

## 75W SS Transformer

Input: 120VAC, 50/60Hz  
Output Voltage: 9V – 15V AC  
Includes Built-in Mechanical Timer  
Dimensions: 4.3"(W) x 6.7"(H) x 4.3"(D)



**12/2: TS-122G250**  
**14/2: TS-142G250**

## Wire

Black direct burial polyvinyl chloride (PVC) coated copper low voltage wire. Available in 12/2 or 14/2 in 250 ft. length.



**9': TS-TPHOT9**  
**15': TS-TPHOT0**

## Photocell

Stem and swivel mount plug-in photocell with 9 in. or 15 ft. lead wire. Compatible with all TruScapes Stainless Steel Transformers.



**TS-WNUT50**

## Wire Nuts

All fixtures come with 2 silicone filled wire nuts. Also available in packs of 50.



**Black: TS-STAKE-BLK**  
**Bronze: TS-STAKE-BRZ**

## Heavy-duty Ground Stake

Size: 8"  
Available in Black or Bronze.



**TS-360G4-1**

## G4 Lamp

Power: 3W LED  
CCT: 2700K  
Beam: 360°  
Lumens: 300



**4W: TS-40MR16**  
**5.5W: TS-60MR16**

## MR16 Lamps

Power: 4W OR 5.5W LED  
CCT: 2700K  
Beam: 4W - 40° – Lumens: 250  
Beam: 5.5W - 60° – Lumens: 450



**TS-120PAR36**

## PAR36 Lamp

Power: 8W LED  
CCT: 2700K  
Beam: 120°  
Lumens: 900

## LIMITED WARRANTIES

TruScapes® Landscape Lighting warrants that its products will be free from defects in workmanship and materials for (1) year. The exceptions are:

- Light fixtures of brass, copper or stainless steel, including finishes are warranted for five (5) years to the original purchaser.
- We recommend only using TruScapes Transformers with our fixtures, due to complications with inferior products that are on the market. (We reserve the right to deny warranty claims when using an alternative power unit.)
- LED Bulbs are warranted for five (5) years or 30,000 hours, whichever comes first to the original purchaser.
- Stainless Steel, Painted and Weatherproof (plastic housing) transformers, excluding timers and photo cells, are warranted for five (5) years to the original purchaser.
- Light sockets and fixture housing on all fixtures are warranted or life to the original purchaser.
- Exterior black powder coat finishes are warranted for 5 years for chipping and flaking to the original purchaser.
- Natural patina on brass is natural and normally occurring and not covered under any warranty.
- TruScapes® warranties do not cover plants that die or burn because of continuous light shined on them. This is not a defect, but the inherent nature of such plants. Certain acid-loving plants such as arborvitae, pine trees, and others must not be exposed to light of any kind for more than 18 hours a day as these plants need time to sleep and allow photosynthesis to naturally occur.

Contact your dealer for more information.



TruScapes Landscape Lighting  
Located in Southeastern PA

contacts@tru-scapes.com  
www.tru-scapes.com

